

THE BARD REDEVELOPMENT

GROUND LEVEL PLAN

shalom baranes associates architects

1 BLEND OF IRONSPOT BRICK - Velour Texture in Colors:
 (A) Dark Ironspot, (B) Medium Ironspot, and (C) Maganese Ironspot



(A) Dark Ironspot



(B) Medium Ironspot



C) Maganese Ironspot



SIMILAR: WALKER ART CENTER, MINNEAPOLIS, MN



2 PAINTED ALUMINUM PANEL - GREY 1



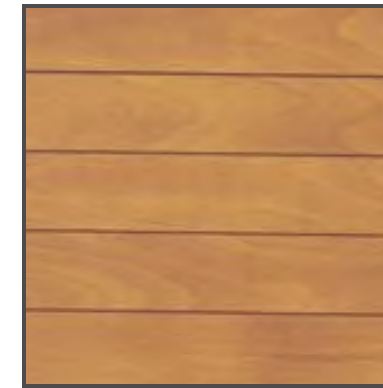
3 PAINTED ALUMINUM PANEL - GREY 2 ORIGINAL - GREY 2



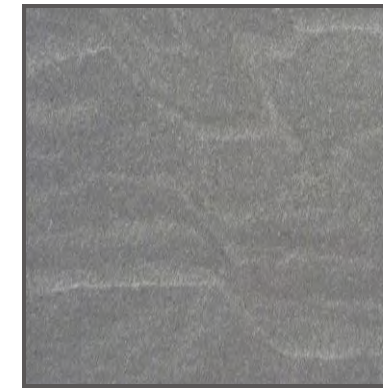
4 PAINTED ALUMINUM PANEL - GOLD



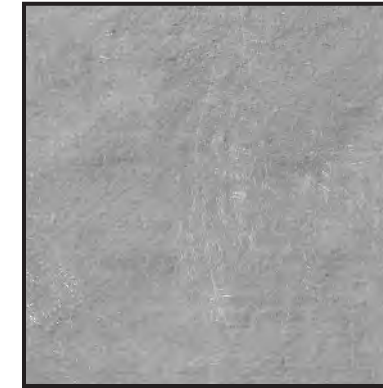
5 LAMINATED WOOD PANEL



6 STONE BASE - MEDIUM GREY



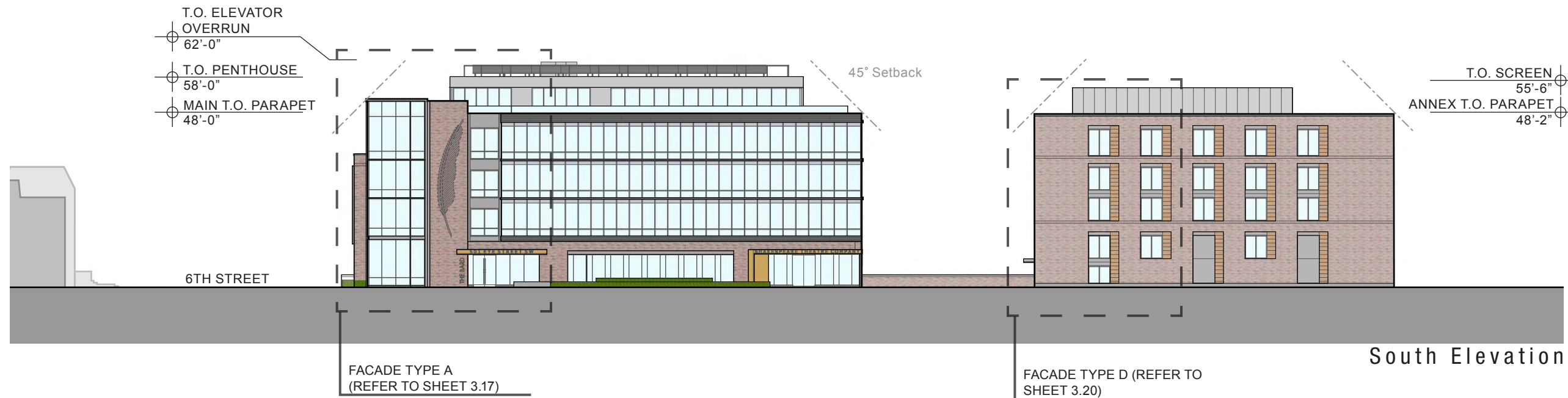
7 CONCRETE BASE - MEDIUM GREY



NOTES:

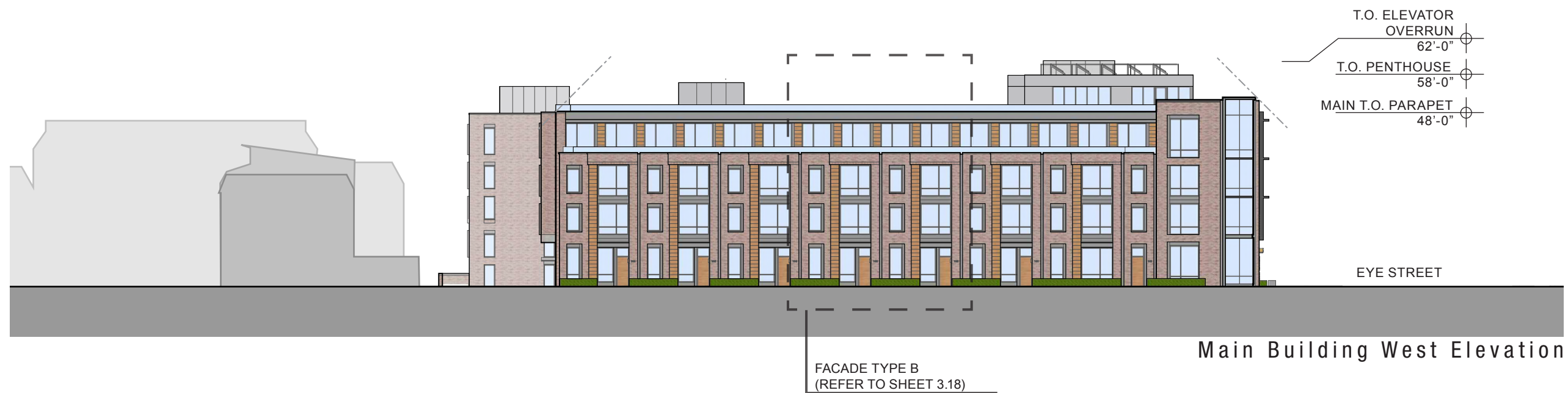
1. Flexibility is requested to vary the final color selection of exterior materials within the ranges proposed, based on availability at the time of construction without reducing the quality of materials.

2. Flexibility is requested to make minor refinements to exterior details and dimensions, including belt courses, sills, bases, cornices, railings and trim, or any other changes to comply with the building codes or that are otherwise necessary to obtain a final building permit.



- NOTES:
1. Building heights are taken from the measuring point on 6th Street at the elevation of +23.00' above sea level. For purposes of the project building height it will act as relative zero. Refer to sheet 3.3 for measuring point location.
 2. Flexibility is requested to vary the final color selection of exterior materials within the ranges proposed, based on availability at the time of construction without reducing the quality of materials.
 3. Flexibility is requested to make minor refinements to exterior details and dimensions, including belt courses, sills, bases, cornices, railings and trim, or any other changes to comply with the building codes or that are otherwise necessary to obtain a final building permit.
 4. For material images refer to page 3.16





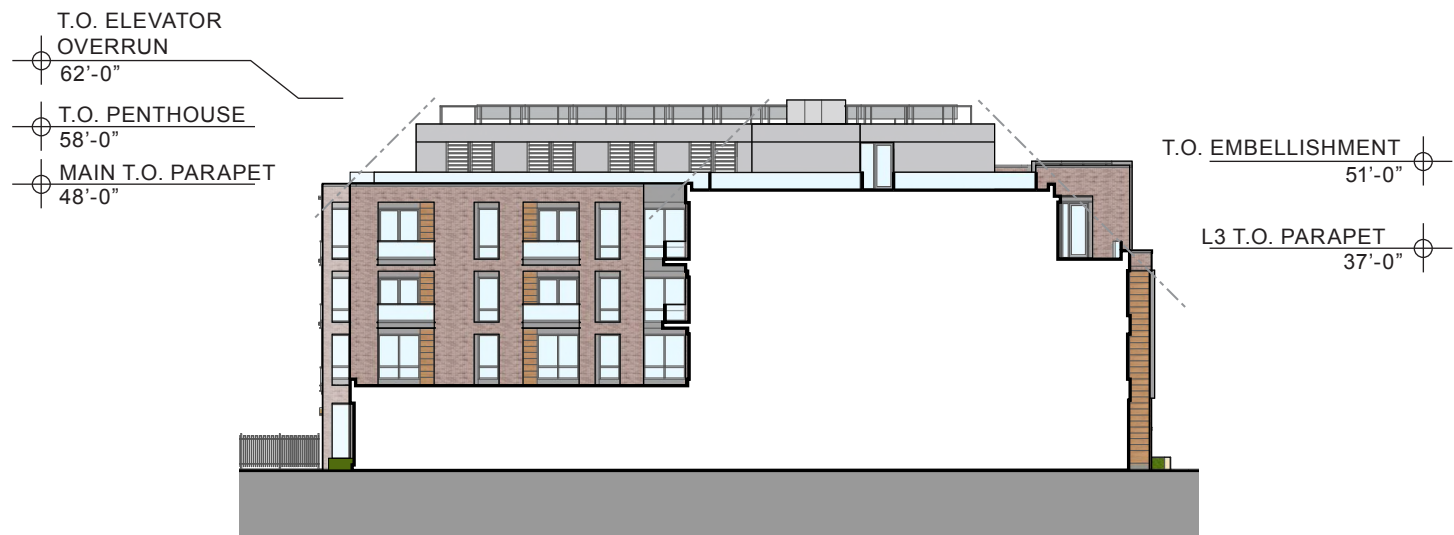
Main Building West Elevation



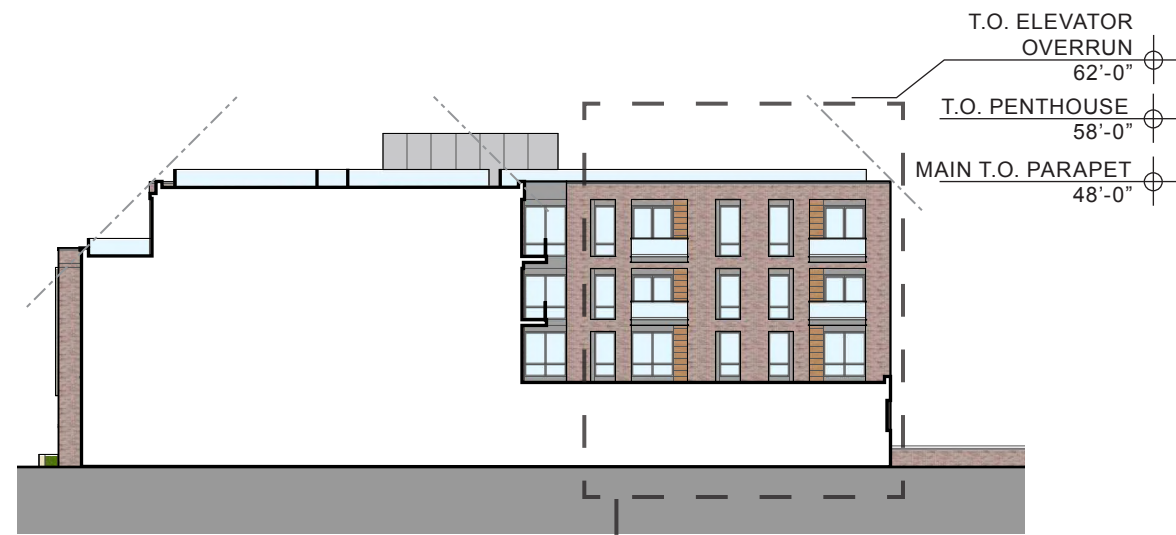
Main Building East Elevation

- NOTES:
1. Building heights are taken from the measuring point on 6th Street at the elevation of +23.00' above sea level. For purposes of the project building height it will act as relative zero. Refer to sheet 3.3 for measuring point location.
 2. Flexibility is requested to vary the final color selection of exterior materials within the ranges proposed, based on availability at the time of construction without reducing the quality of materials.
 3. Flexibility is requested to make minor refinements to exterior details and dimensions, including belt courses, sills, bases, cornices, railings and trim, or any other changes to comply with the building codes or that are otherwise necessary to obtain a final building permit.
 4. For material images refer to page 3.16





North Courtyard Elevation



South Courtyard Elevation

FACADE TYPE C
(REFER TO SHEET 3.19)

- NOTES:
1. Building heights are taken from the measuring point on 6th Street at the elevation of +23.00' above sea level. For purposes of the project building height it will act as relative zero. Refer to sheet 3.3 for measuring point location.
 2. Flexibility is requested to vary the final color selection of exterior materials within the ranges proposed, based on availability at the time of construction without reducing the quality of materials.
 3. Flexibility is requested to make minor refinements to exterior details and dimensions, including belt courses, sills, bases, cornices, railings and trim, or any other changes to comply with the building codes or that are otherwise necessary to obtain a final building permit.
 4. For material images refer to page 3.16

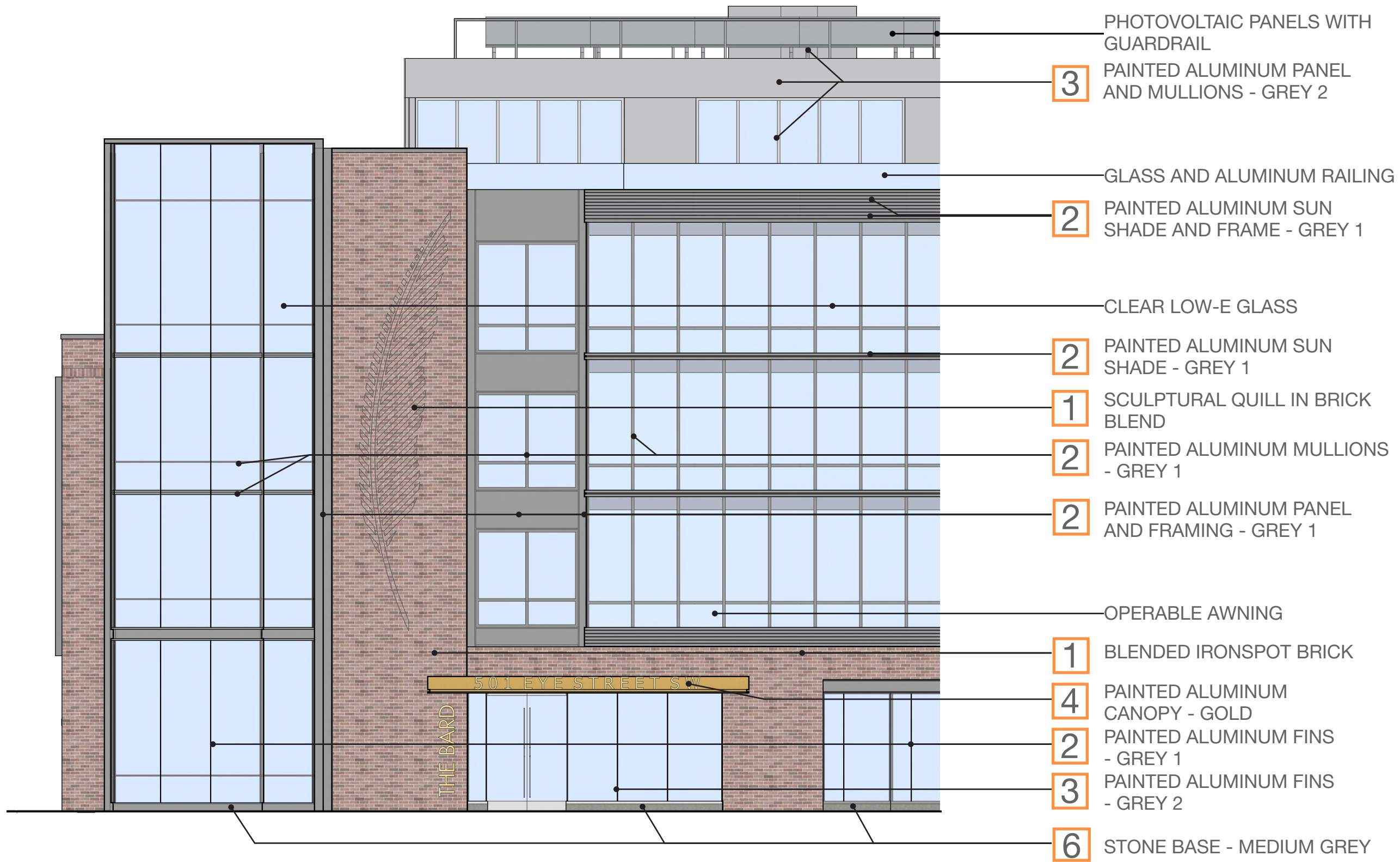


Annex West Elevation



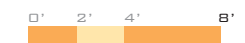
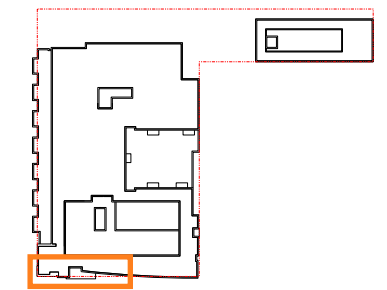
Annex East Elevation

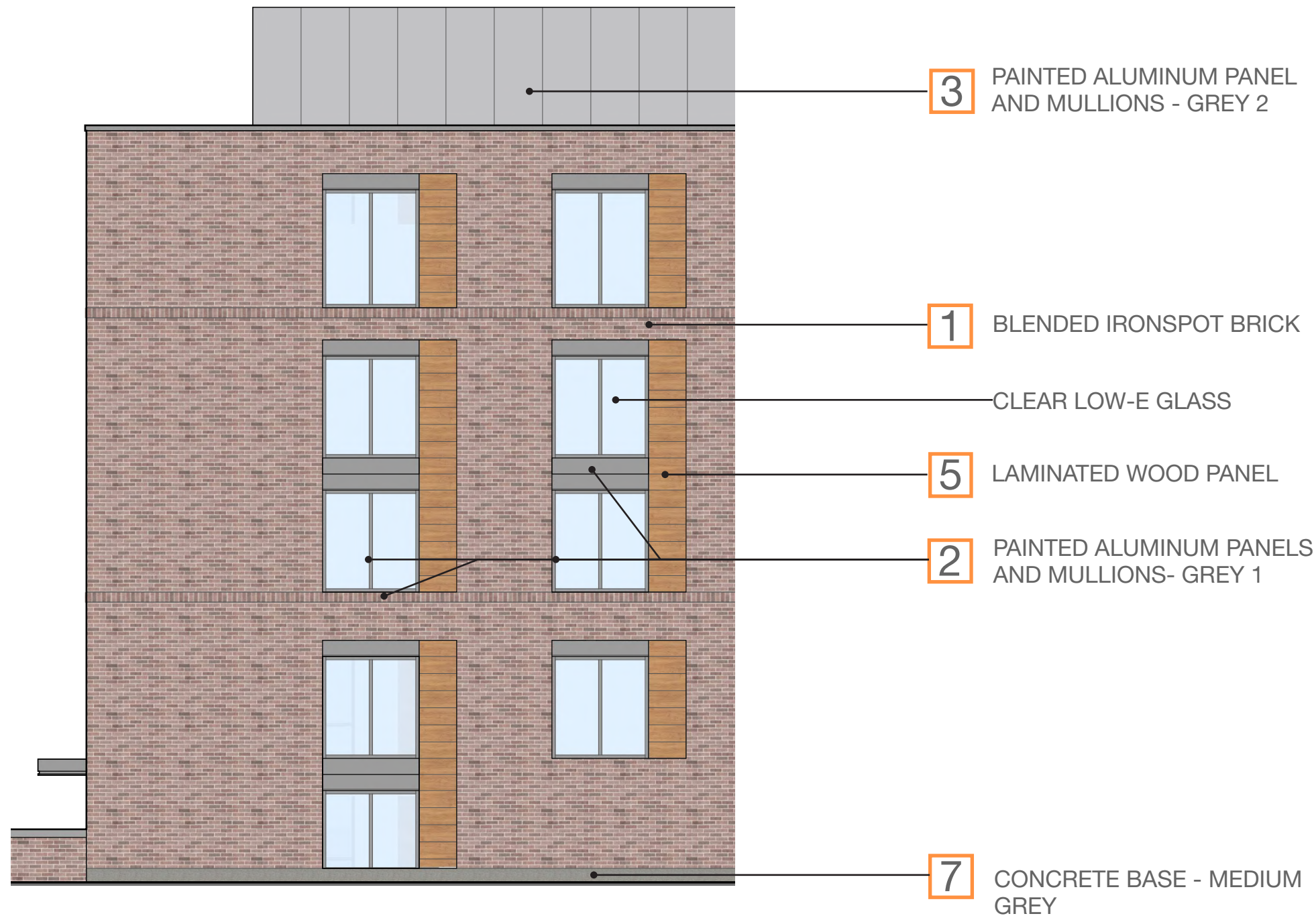




NOTES:

1. Flexibility is requested to vary the final color selection of exterior materials within the ranges proposed, based on availability at the time of construction without reducing the quality of materials.
2. Flexibility is requested to make minor refinements to exterior details and dimensions, including belt courses, sills, bases, cornices, railings and trim, or any other changes to comply with the building codes or that are otherwise necessary to obtain a final building permit.
3. For material images refer to page 3.16



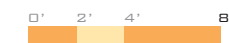
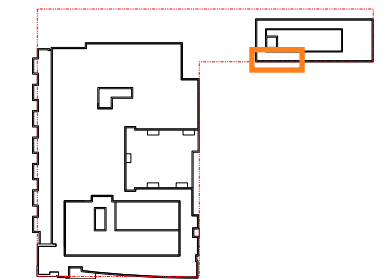


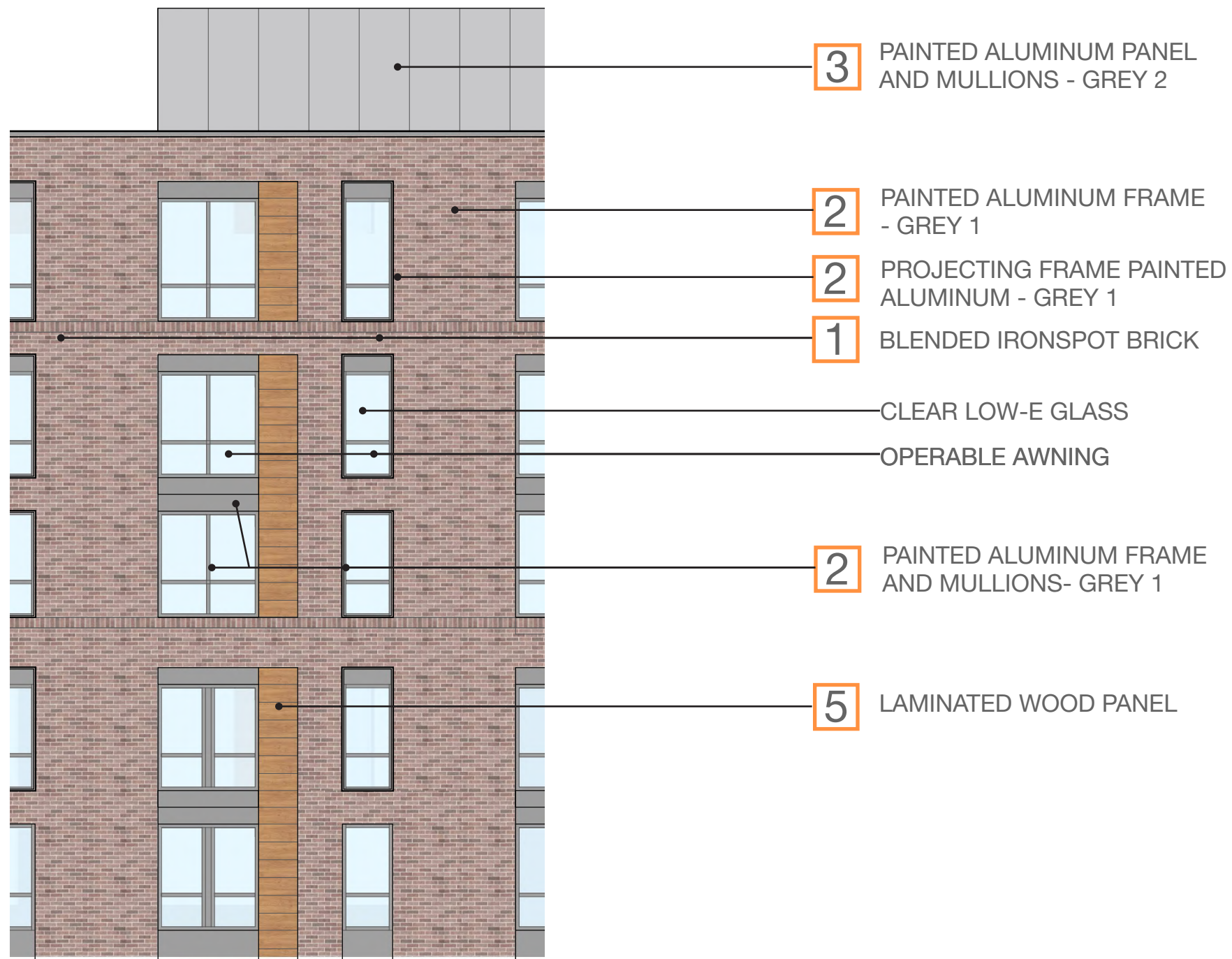
NOTES:

1. Flexibility is requested to vary the final color selection of exterior materials within the ranges proposed, based on availability at the time of construction without reducing the quality of materials.

2. Flexibility is requested to make minor refinements to exterior details and dimensions, including belt courses, sills, bases, cornices, railings and trim, or any other changes to comply with the building codes or that are otherwise necessary to obtain a final building permit.

3. For material images refer to page 3.16



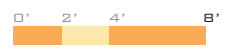
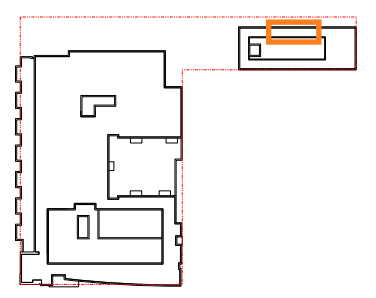


NOTES:

1. Flexibility is requested to vary the final color selection of exterior materials within the ranges proposed, based on availability at the time of construction without reducing the quality of materials.

2. Flexibility is requested to make minor refinements to exterior details and dimensions, including belt courses, sills, bases, cornices, railings and trim, or any other changes to comply with the building codes or that are otherwise necessary to obtain a final building permit.

3. For material images refer to page 3.16







THE BARD REDEVELOPMENT

6TH AND EYE STREET SW VIEW FROM SW

shalom baranes associates architects

Southwest Washington, D.C.

April 11, 2019 sba project# 14105 © 2019 Shalom Baranes Associates

PENTHOUSE MATERIAL UPDATE





THE BARD REDEVELOPMENT

6TH AND H STREET SW VIEW FROM NORTH

shalom baranes associates architects

Southwest Washington, D.C.

April 11, 2019 sba project# 14105 © 2019 Shalom Baranes Associates

PENTHOUSE MATERIAL UPDATE





THE BARD REDEVELOPMENT

Southwest Washington, D.C.

EYE STREET SW VIEW FROM SE

April 11, 2019 sba project# 14105 © 2019 Shalom Baranes Associates

shalom baranes associates architects

PENTHOUSE MATERIAL UPDATE 13

